



**Clark Electric
Cooperative**

Your Touchstone Energy® Partner 



Tim Stewart,
CEO/Manager

ANNUAL MEETING AND LINEMAN APPRECIATION DAY

Our 80th annual meeting is now only days away, and I hope you have Wednesday, April 12, marked on your calendars and are planning to attend. Members will hear reports about the cooperative and the electric industry,

review financials, conduct business, and elect your representative to serve on the board of directors.

The members will be asked to elect two directors for three-year terms. Director terms expiring this year are those of Jim Hager from the Town of Colby and Scott Johnson, Town of Unity. Both Hager and Johnson are eligible for re-election. Nominations for the director positions are taken from the floor of the meeting.

The cooperative's bylaws establish the minimum qualifications for being a director. A copy of the bylaws is available on the cooperative's website at www.cecoop.com or by contacting the business office at 715-267-6188. I hope to see you there.

Lineworker Appreciation Day

The Monday preceding our annual meeting, April 10, 2017, has been designated National Lineman Appreciation Day. This is a day to honor the dedicated line workers who often work in challenging conditions to keep the lights on. We

proudly recognize all electric linemen for the services they perform around the clock in dangerous conditions to keep power flowing and protect the public's safety.

"We've got a great group of linemen here at Clark Electric Cooperative who work tirelessly here in Clark, Chippewa, Jackson, Marathon, Wood, and Taylor counties. When the weather gets nasty and most of us hunker inside, our linemen head out, no matter what time of day, or day of the week it might be. Our line workers are the first responders of our electric distribution system, and they work around the clock on high-voltage lines," said Tim Stewart, CEO/general manager. "Conditions can be dangerous, but they power through to ensure reliable service for our members."

Not only do they work hard to keep the lights on in our own community, but our line crews also stand ready to answer a call for help from beyond our counties' borders. Electric cooperatives have a mutual aid agreement called Restoration of Power in an Emergency (ROPE), whereby cooperatives assist one another in times of emergencies. We've answered the call many times around Wisconsin and also other states like Louisiana during Hurricane Katrina.

On April 10, 2017, when you flip a light switch, power up your computer, turn on your TV, or perform any of the countless tasks that electricity enables you to, take a moment to appreciate the hard-working linemen who make that possible.



Clark Electric Line Department

Back row, left to right:
Jonny Hilbert, Jared Jensen.

Second row, from top left
to right: Konner Kitzhaber,
Kole Hinker.

Third row, from top left
to right: Josh Burns, Mike
Hackel, Jeff Fellenz, Kent
Weigel.

Fourth row, left to right:
Jeff Block, Dan Sturz, Scott
Bailen, Warren Luedtke,
Chad Steffen, Jarred
Martens, Pat Susa.

Bottom row, left to right:
Kevin Sterland, Amber
Reddy, Mike Ruff, Rick Suda.

Not pictured: Sandy Klinke



2017 YOUTH LEADERSHIP PARTICIPANTS NEEDED

High school students can experience college life at UW-River Falls

Clark Electric Cooperative is looking for students from local high schools to represent us at this year's Youth Leadership Congress (YLC) to be held on the campus of UW-River Falls July 26–28, 2017.

The WECA Youth Leadership Congress is a great opportunity for students to develop and enhance their leadership potential. The event is sponsored by UW-River Falls and Wisconsin electric cooperatives and is designed to develop leadership skills while teaching students the purpose, operation, and scope of cooperative business.

The event features leadership seminars lead by nationally acclaimed speakers and presenters focusing on the structure of the cooperative business, team-building exercises, and many other fun activities. Join students from your neighboring



schools in learning what makes the cooperative business model different and successful.

Clark Electric has sponsored students to this event since its inception. We believe in developing the potential of tomorrow's leaders. The YLC is a fun and educational event, designed by students who were elected by their peers at the previous year's conference to serve on the WECA Youth Board.

There is no cost to the student for attending. The registration and travel expenses will be covered by the cooperative. If you are going to be a sophomore or a junior in high school this coming fall and would like to be a sponsored representative for Clark Electric Cooperative, contact your FFA or FBLA advisor. You may also contact Tracy Nelson, administrative assistant, at 715-267-6188 or 1-800-272-6188.

REPRESENT YOUR

ELECTRIC COOPERATIVE

at the Dairyland Power Cooperative
Annual Meeting

Wednesday, June 7, 2017

Representing your cooperative and your fellow members at various meetings is an opportunity that we ask our members to participate in every year. The Dairyland Power Cooperative Annual Meeting will be held on Wednesday, June 7, 2017, in La Crosse. We need 11 delegates and four alternates.

By attending and being a delegate for your cooperative, you help keep Clark Electric Cooperative strong and prosperous. If you would like to represent Clark Electric Cooperative at this meeting, please contact Tracy Nelson, administrative assistant, by Monday, April 3, 2017. Tracy can be reached by calling the cooperative office at 715-267-6188 or at 800-272-6188.

NONDISCRIMINATION STATEMENT

In accordance with Federal civil rights law and U.S. Department of Agriculture (USDA) civil rights regulations and policies, the USDA, its Agencies, offices, and employees, and institutions participating in or administering USDA programs are prohibited from discriminating based on race, color, national origin, religion, sex, gender identity (including gender expression), sexual orientation, disability, age, marital status, family/parental status, income derived from a public assistance program, political beliefs, or reprisal or retaliation for prior civil rights activity, in any program or activity conducted or funded by USDA (not all bases apply to all programs). Remedies and complaint filing deadlines vary by program or incident.

Persons with disabilities who require alternative means of communication for program information (e.g., Braille, large print, audiotope, American Sign Language, etc.) should contact the responsible Agency or USDA's TARGET Center

at (202) 720-2600 (voice and TTY) or contact USDA through the Federal Relay Service at (800) 877-8339. Additionally, program information may be made available in languages other than English.

To file a program discrimination complaint, complete the USDA Program Discrimination Complaint Form, AD-3027, found online at http://www.ascr.usda.gov/complaint_filing_cust.html and at any USDA office or write a letter addressed to USDA and provide in the letter all of the information requested in the form. To request a copy of the complaint form, call (866) 632-9992. Submit your completed form or letter to USDA by:

- (1) Mail: U.S. Department of Agriculture
Office of the Assistant Secretary
for Civil Rights
1400 Independence Avenue, SW
Washington, D.C. 20250-9410;
- (2) Fax: (202) 690-7442; or
- (3) Email: program.intake@usda.gov.

Clark Electric Cooperative is an equal opportunity provider and employer.

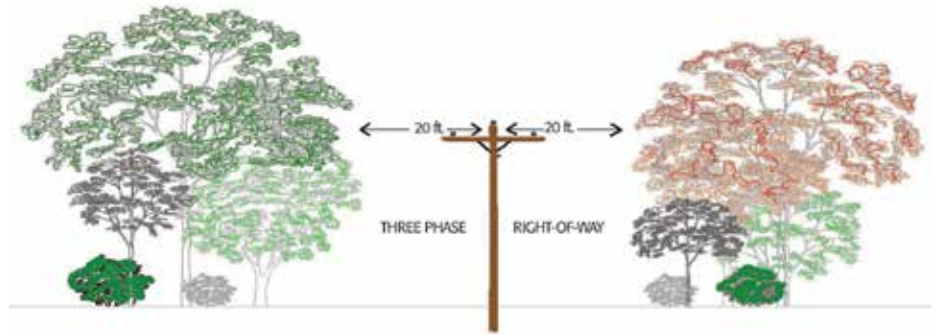
CONSIDER POWER LINES WHEN PLANTING TREES THIS SPRING

With the winter season in the rear view mirror, the smell of spring in the air, and thoughts of green grass comes the planting season.

Whether you're planting a single tree in the front yard or several thousand trees to start a plantation, it's important to consider the species of trees and the location in which you plan to plant them. This is especially important if you are planting trees near overhead power lines, says Mike Ruff, director of operations. Many people plant trees too close to power lines. They think that the trees will never get tall enough to grow into the power lines, or they simply forget to look up before they plant them.

Most trees will grow tall enough to touch power lines faster than you think. So take time to research your tree selection or consult with your local tree nursery for advice on which trees are appropriate for your landscaping area.

As the trees grow they can come into contact with the power lines and create power outages or momentary interruptions. However, the greatest concern is



the safety risk that can be created when children climb trees near power lines. Accidental contact with electrical wires while playing in or climbing a tree can be fatal.

As we move through the spring season and into summer, please take some time to consider a few things when planting, especially around power lines.

1. Clark Electric Cooperative requires 15 feet of clearance on both sides of the line for single-phase lines and 20 feet for three-phase lines.
2. Be sure to plant your trees far enough away from power lines so that when the trees are fully grown,

there will still be 20 feet of clearance to the power line without the need for trimming.

3. Remember, if you chose to plant trees in the right-of-way or too close to the right-of-way, your trees may need to be trimmed or cut some day, and that day may come sooner than you think.

If you have trees that appear to be growing into power lines, contact Clark Electric Cooperative at 1-800-272-6188. Never try to prune them yourself. We have skilled professionals trained to safely prune and trim trees for electric line clearance.

MY CO-OP

Slate.
AN EFFORTLESS FINISH

Slate's matte finish hides fingerprints, holds magnets and goes with just about anything. It's an easy way to make your kitchen stand out for all the right reasons.

GE APPLIANCES

<p>GE® 22.7 CU. FT. FRENCH-DOOR REFRIGERATOR</p> <ul style="list-style-type: none"> • 32" WIDE • INTERNAL WATER DISPENSER WITH GE WATER FILTRATION • FACTORY-INSTALLED ICE MAKER • UPFRONT TEMPERATURE CONTROLS <p>GNS21GMHES \$1599</p>	<p>GEOSPRING™ HYBRID WATER HEATER</p> <ul style="list-style-type: none"> • SAVES \$225 EVERY YEAR* IN WATER HEATING EXPENSES (BASED ON DOE TEST PROCEDURES AND COMPARISON OF 80-GALLON STANDARD ELECTRIC TANK WATER HEATERS USING 4879 <p>GEHS0DEEDSR \$1059</p>	<p>GE® 7.0 CU. FT. MANUAL DEFROST CHEST FREEZER</p> <ul style="list-style-type: none"> • 7.0 CU. FT. CAPACITY • POWER "ON" LIGHT • 2 LIFT-OUT, SLIDING BULK STORAGE BASKETS • ADJUSTABLE TEMPERATURE CONTROL <p>FCM7SHWW \$399</p>	<p>GE® 30" FREE-STANDING ELECTRIC RANGE</p> <ul style="list-style-type: none"> • 3 1/2" BURNER ELEMENT • FAST PREHEAT • FIFTH ELEMENT WARMING ZONE • 6 1/2" POWER BOIL ELEMENT <p>JB650DFBB \$599</p>
--	---	--	---

CLARK ELECTRIC APPLIANCE & SATELLITE
1209 West Dall-Berg Road, Greenwood • 715-267-6544

Hours: M-F 8 a.m.-4:30 p.m.
www.cecoop.com

811

APRIL IS SAFE DIGGING MONTH

*Planning a home improvement project?
Planting a tree?
Installing a fence or deck?*

Call BEFORE you dig!

Call Diggers Hotline at 811 or 800-242-8511 to have underground lines and cables located before you start your project. It's free, and it could save you from injury and/or costly damage!



Hotline safety demonstration

Pictured here are Scott Bailen, lineman; Kent Weigel, lineman; and Pat Susa, warehouseman, putting on a hotline demonstration for the Greenwood and Loyal EMTs and Fire Departments.

KNOWING WHAT TO DO IN AN ACCIDENT CAN SAVE YOUR LIFE

“When people are involved in a car accident, electricity is usually the last thing on their minds,” explains Molly Hall, executive director of the Energy Education Council’s Safe Electricity program. “We’re usually more concerned about whether anyone was injured or how badly the vehicle is damaged. We can forget that by exiting the vehicle, we’re risking exposure to thousands of volts of electricity from downed power lines.”

If you are in an accident with a utility pole, your vehicle may be charged with electricity. If this is the case and you step out of the car, you will become the electricity’s path to the ground and could be electrocuted. Loose wires and other equipment may be in contact with your car or near it—creating a risk for electrocution if you leave the vehicle.

While downed lines can sometimes reveal they are live by arcing and sparking with electricity, this is not always the case. Power lines do not always show signs that they are live, but they are just as lethal.

After an accident, stay in the car, and tell others to do the same. If you come upon an accident involving power lines, do not approach the accident scene. If you see someone approaching, warn them to stay away. Call 911 to notify emergency personnel and utility services. Do not leave your vehicle until a utility professional has told you it is safe to do so.

The safest place to be is almost always inside the car. The only circumstance when you should exit the vehicle is if it is on fire—and those instances are rare. If you must exit the vehicle, jump clear of it with your feet together and without touching the vehicle and ground at the same time. Continue to “bunny hop” with your feet together to safety. Doing this will ensure that you are at only one point of contact and will not have different strengths of electric current running from one foot to another, which can be deadly.—Source: *SafeElectricity.org*.



Forget wall-mounted thermostats that can be difficult to program or operate. Daikin systems feature built-in intelligence that allows individual control with the ability to automatically maintain preferences. These systems make subtle and continuous adjustments to ensure your home stays at a constant and comfortable temperature at the touch of a button.



Contact Greg for all of your heating and cooling needs.

CLARK ELECTRIC APPLIANCE & SATELLITE

1209 West Dall-Berg Road, Greenwood

From Greenwood, west on CTH G, south on River Road, and west on Dall-Berg Road
866-279-6544 or 715-267-6544 • Hours: M-F 8 a.m.–4:30 p.m.

Tim Stewart, CEO/Manager

1209 West Dall-Berg Road, P.O. Box 190, Greenwood, WI 54437
email us at info@cecoop.com or tnelson01@cecoop.com
www.cecoop.com



Clark Electric
Cooperative

Your Touchstone Energy® Partner